



# QUALITY ALUMINUM BOAT LIFTS, INC. INSTRUCTIONS

Beamless Boat Lift

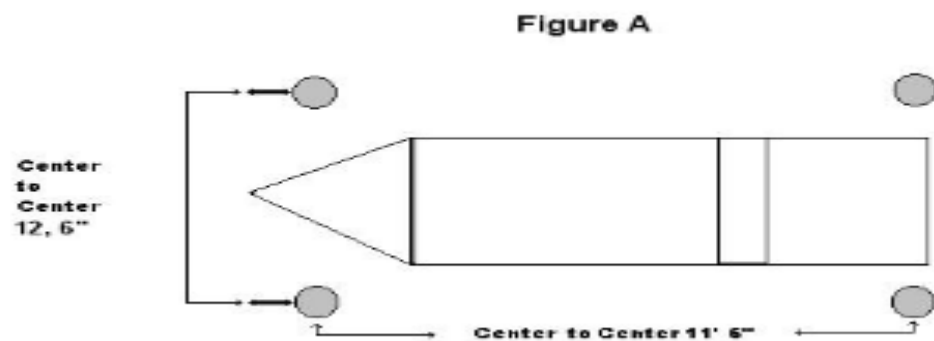
## Quality Aluminum Boat Lifts, INC.

### Installation Instructions: Beamless Lift

Thank you for your recent Boat Lift purchase, the installation of this lift is easier than others because of its lightweight aluminum design and simple operation. In the pages that follow we will take you step-by-step through the entire installation sequence, including the lifting of the boat. We encourage you to read this manual entirely before attempting the installation. Failure to do so could result in serious injury or death. We are happy to assist you with any Technical questions that you may have, please feel free to contact via email at the email address included.

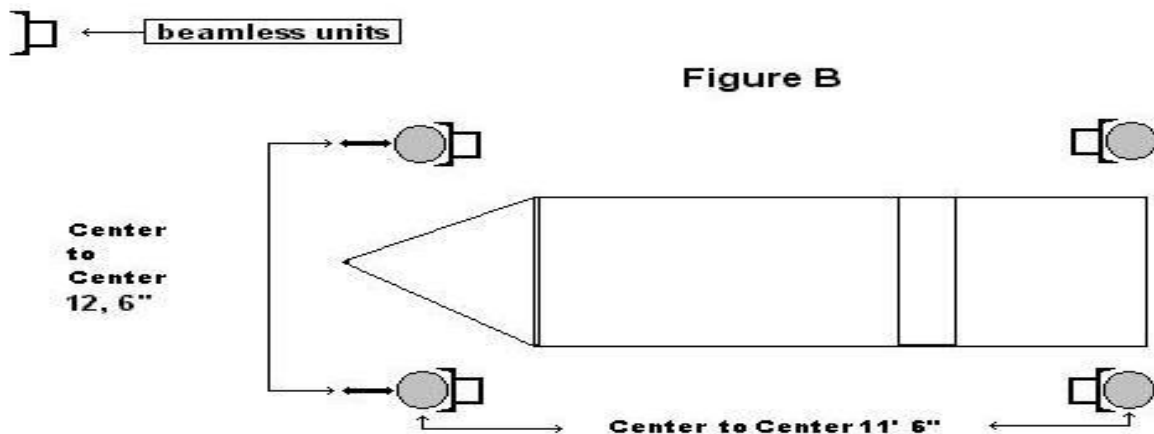
#### STEP ONE (1): CONFIRM PILING PLACEMENT

1. Confirm that the FOUR (4) Pilings are Square and Set properly to the piling specifications. (FIGURE A)

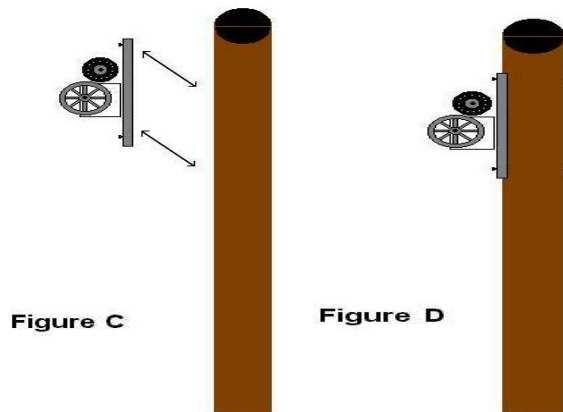


#### STEP TWO (2): MOUNTING BEAMLESS UNITS

1. Locate the height to mount the beamless units to the inside of the piling. **IMPORTANT:** the units must hang according to wire length. (FIGURE B)



2. Pre-Drill the top hole directly in the center of the piling. (FIGURE C)
3. Hang unit on piling using ½" S.S. Mounting Hardware through the piling using ½" flat washer on aluminum mount and the back side of the piling. (FIGURE D)
4. Drill through bottom hole, continue into to the piling.
5. Mount as the same as above in Step 3.
6. Repeat ENTIRE STEP 2: 1-5 all three (3) Units.

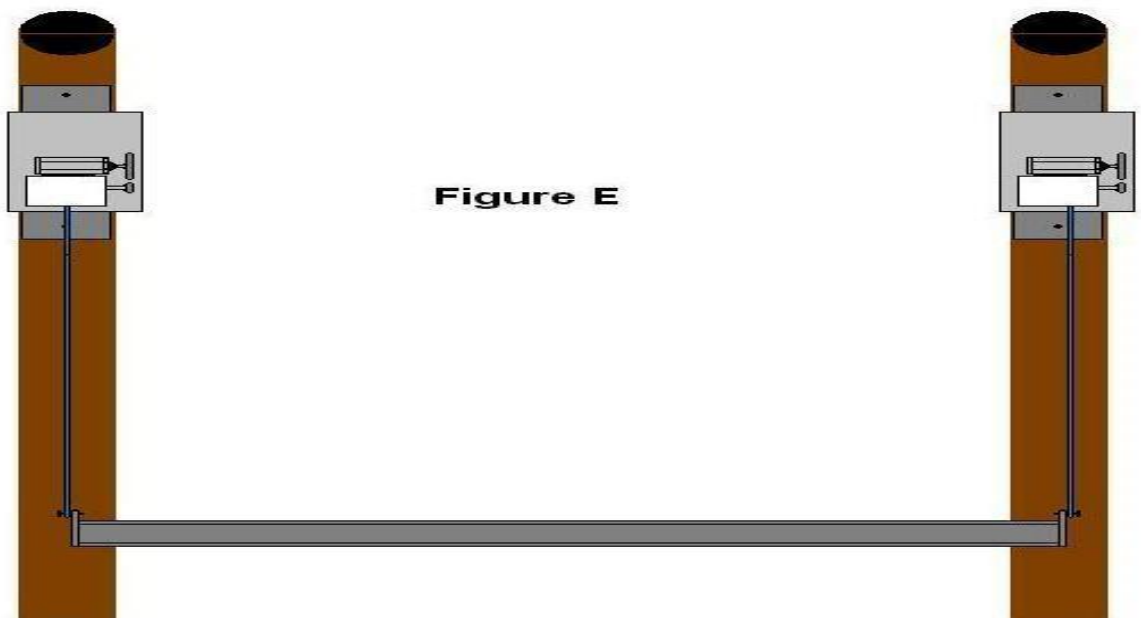


### STEP THREE (3): INSTALLING OF SWITCHES

1. Fix board to piling large enough to hold ALL four (4) switches and is in relation to where the beamless units are mounted. **IMPORTANT: Mount Board to piling with the beamless units with the least amount of wire.**

### STEP FOUR (4): ATTCHAMENT OF CABLE TO CRADLE ENDS

1. Connect the beamless units to power.
2. Lower the cable down into the water.
3. Attach the beamless units to the cradle ends using the 1 ½" x ½" S.S. bolt, lock washer, flat washer and nut. (FIGURE E)

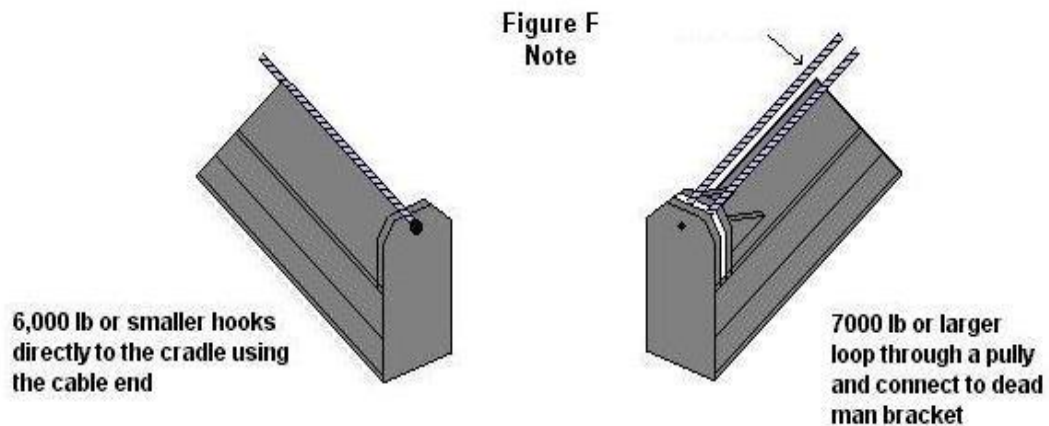


## STEP FIVE (5): INSTALL OF CABLE

1. Carefully start winding cables onto roll pipe. (FIGURE F)

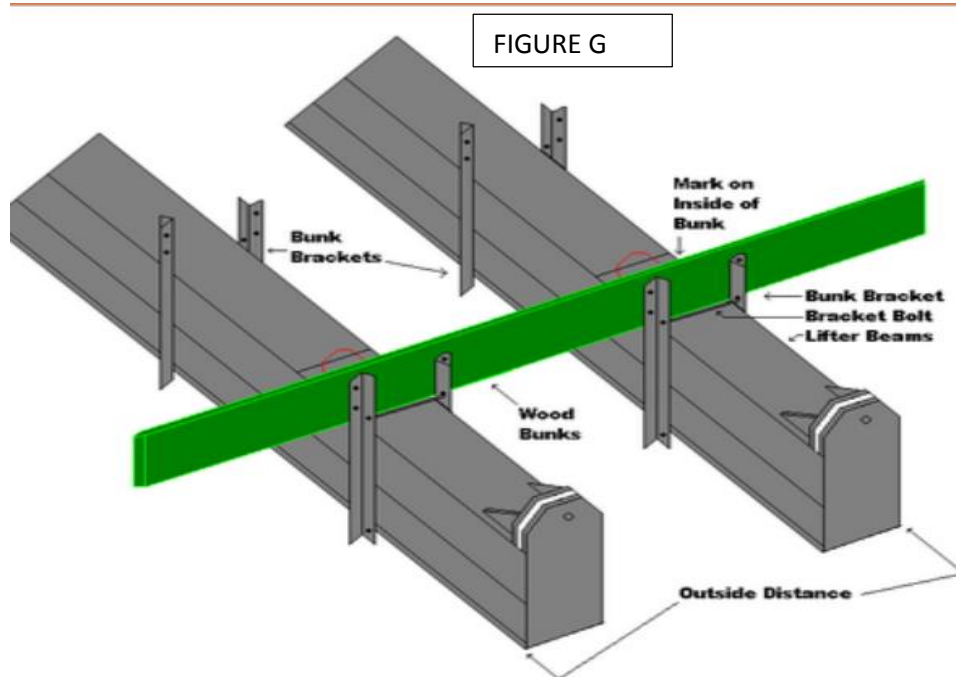
**NOTE:** It is important to keep tension on lifter cable until weight of cradle beam keeps tension on cable for you. Allowing the beam to be placed in the water will tension the cables if the water is deep enough doing this will allow the cables to wind neat and tight.

2. Continue to wind the cables until cradle beams are at desired height for attaching bunk brackets and bunks



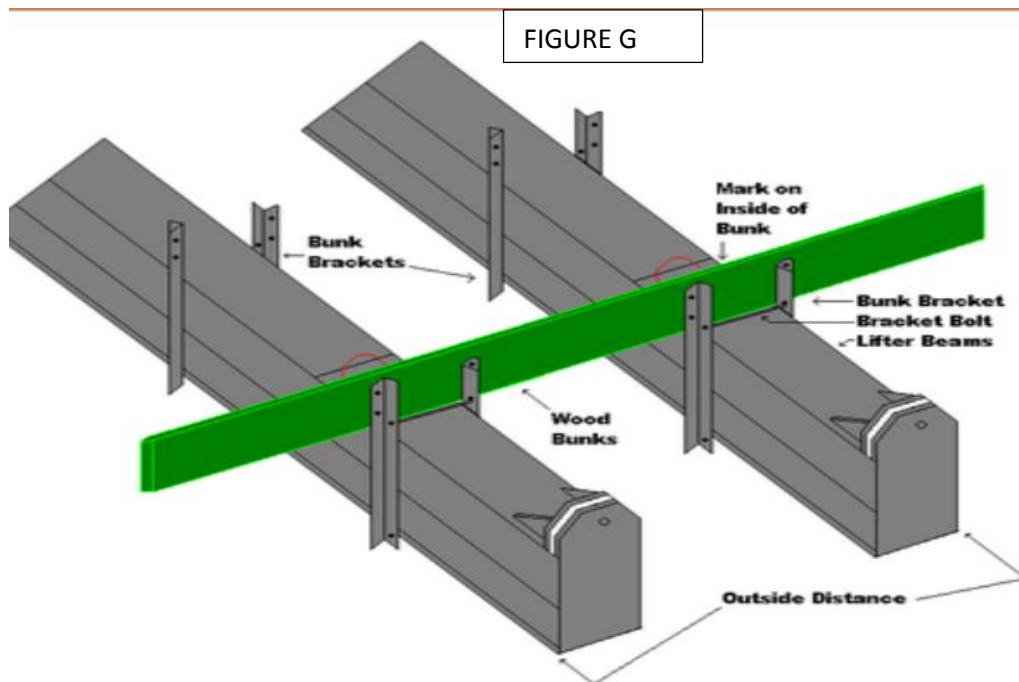
## STEP SIX (6): ATTACHMENT BUNK BRACKETS TO CRADLE BEAMS

1. Attach the Aluminum Angle Brackets Eight (8) FOUR [4 SETS], to the Cradle Beam with TWO (2) long Stainless Steel Bolts. ONE (1) Bolt sits on top of Cradle Beam, the other Bolt rides under the Cradle Beam. (FIGURE G)



## STEP SEVEN (7): ATTACH WOOD BUNKS TO BUNK BRACKETS

1. Confirm Beams are hanging freely, measure outside distance of cradle beams flanges (FIGURE G) and transfer to inside bunk allowing for equal overhang past the beams.
2. Confirm that the Cradle Beams do not shift when doing this operation.
3. With Bunk Brackets attached to the Cradle Beams, lay Bunk in position with mark at edge of Beam Flange.
4. Drill FOUR (4) 3/8" Holes and install Bunk Bolts. Repeat this procedure for opposite end of bunk.
5. Attach Wood Bunks to the Bunk Brackets using proper length Nuts, Bolts and Lock Washers supplied. (FIGURE G)
6. Guide Post Brackets; Slide Galvanized weight pipes inside the Guide Post Bracket. The 2" White P.V.C. Pipes slide over outside of Guide Post Bracket and Weight Pipe.
7. Attach Cobbers to lift by fitting the cover over mounting pins and tightening the Wing Nuts. Lubricate Drive Plate and Motor Housings with a Rust Preventative Lubricating such as Corrosion Block.

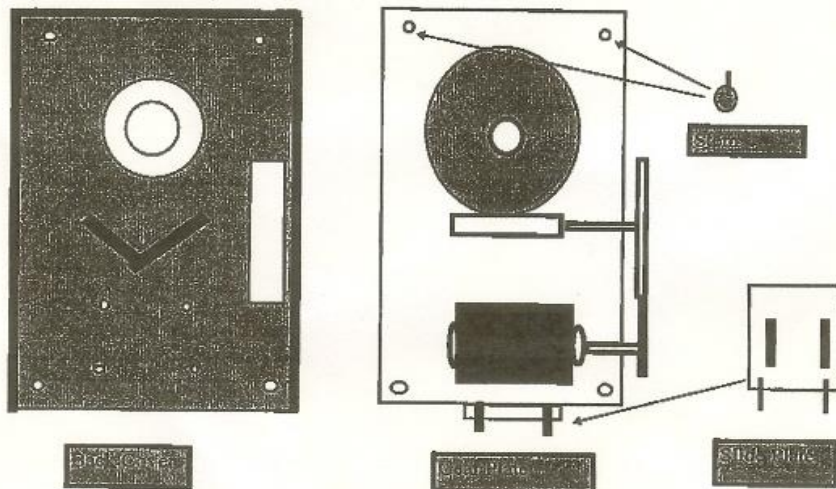


**STEP EIGHT (8): MOUNTING COVER**

**Instructions for installing Back Cover.  
AMS part Number 1102**

When installing the AMS Back cover Please observe the following steps.  
Note; Read definitions first.

1. Install the two Stems on gear plate in the top holes, on the inside, with pins straight up using 5/16"x7/8" SS bolts, hex nuts & Washers.
2. Place gear plate, gear side down, put motor in position for belt to fit (large pulley has been installed). Align slide plate on the outside, bottom of gear plate over four bolt holes for motor with pins sticking down. Place back cover over gear plate aligning four holes in back cover with four holes in gear plate.
3. Install motor on inside of gear plate using four 5/16" hex head bolts, washers, lock washers & hex/wing nuts. (2- 1" long bolts are furthest from the edge and 2- 1-1/2" bolts on the edge. ) use the wing nuts on 1-1/2" bolts. The bolt heads should be on the outside. The bolts are passing through the back cover, \*slide plate \*(bottom bolts only), gear plate & motor base. Install washers, lock washers and nuts, do not tighten yet. Install belt, align and tighten bolts holding motor. Note the slide plate pins should project about 1/2" beyond bottom edge of back cover.
4. Install gear plate with back cover attached and Test run unit.
5. To install cover, place cover over stem pins on top of gear plate in mating holes in the cover, push cover down until cover is resting on the slide plate pins, bend cover out to snap over the pins.



**Definitions:** Gear plate = 12"x24" steel plate with large gear, Gear plate top = 12" side nearest gear, Gear plate inside = Gear side, Stems = SS washers with pins, Slide plate = SS panel with pins & slotted holes, Back cover = Cover that is flat with small flanges on 3 sides.

**HELPFUL NOTES:**

1. Caution: Boat Lifts Are Not Made For Lifting Humans.
2. Place A Rubber Mat Between Top of Piling And Aluminum To Prevent Electrolysis.
3. Installer is responsible for determining if piling are square and adequate to carry the lift and the lifts payload.
4. Warning: Any modification to lift voids Warranty of Quality Aluminum Boat Lifts, INC.

Any questions regarding the installation of your lift our technical experts are happy to assist you @ our email: [Qualityboatlift@gmail.com](mailto:Qualityboatlift@gmail.com) Attention: Technical Support. To quicken the process please add the pictures of the part or lift area you have questions about send to our staff also.

Thank you,

Quality Aluminum Boat Lifts, INC.